

Updating or changing a meter Dataset

The end user can load new or different datasets into the Satmeter. The transfer is very easy and uses the SatLoader.exe application, and the Datasets published on <http://www.satmeter.com>.

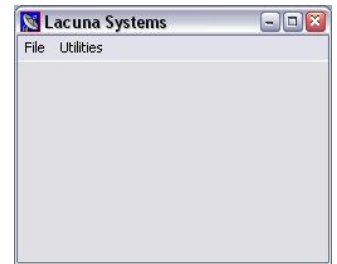
You must have a Zip file extraction utility to decompress the SatLoader.exe file after you have downloaded it from the website. Follow the link to WinZip® for such a utility.

The meter must be connected to a computer running Microsoft Windows® using the special interface cable. If you do not have one, there is a pinout diagram on the website.

The meter must be switched on and have reached at least 'SET BACKLIGHT' before data transfer.

Download both the SatLoader.exe application and the required dataset file from the website, and store them in an easily located folder on your hard drive. The new data will overwrite all data in the meter.

Start the application by double clicking the SatLoader.exe entry. The simple interface opens.



If you are using the application for the first time, you must set it to use the correct serial (COM) port through the option in the Utilities menu.

A dialog box will allow you to choose an appropriate port number.

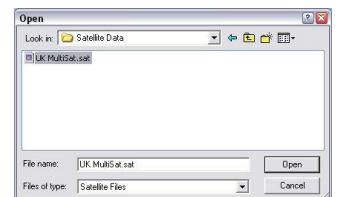
If you are using a USB to Serial converter cable, it is worth identifying its port through the Control Panel, System information utility on your PC, rather than just guessing.



Begin the transfer of the dataset by choosing the Download option from the Utilities menu.



The Windows® file dialog box will open and you should navigate to the folder on your hard drive where you stored it when you downloaded. By pressing the Open button in the window you start the transfer.



A screen will show the transfer of the data, and then you will be told when the transfer is complete.

That's it! Just restart the meter to enforce the changes.



Remember:

- You have to download SatLoader.exe and decompress it to your hard drive.
- The dataset must be downloaded to your hard drive. It does not have to be unzipped.
- The meter must be switched on and have reached at least 'SET BACKLIGHT'.
- The correct COM port must be selected.